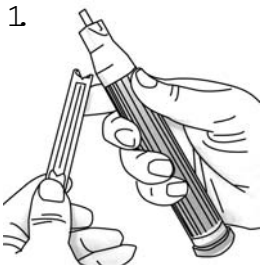




# FrameCo V-NAILS

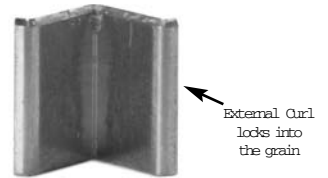
#10404

PICTURE FRAME JOINING NAILS

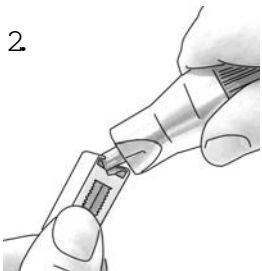


1. Push the slide firmly upwards, then release. Too much pressure will cause 2 V-Nails to be loaded

- ENSURES A TIGHT & SECURE MITRE JOIN
- SILICONE TIPPED FOR EASY INSERTION
- HARDWOOD & NORMAL VERSIONS



FrameCo picture "Frame V-Nails", are the universal method used by picture framers worldwide to join picture frame mouldings. First introduced in 1979 by Antoine Cassese, the French inventor, V-Nails have become the easiest and quickest way to secure a mitred joint. Glue alone is not sufficient, and traditional staples do not pull the join together.



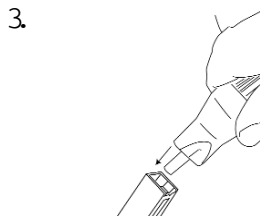
2. Insert the PushMaster into the end of the cartridge UNDER the exposed V-Nails. Pull the PushMaster outwards to pull off ONE V-Nail onto the Magnetic Tip

## How to Use the V-Nail Cartridge

### Instructions

- Select a V-Nail suitable to the moulding height. As a general rule, use a V-Nail about 50 - 60% of the moulding height. V-Nails are available in 4 different lengths and the PushMaster will take all sizes. 7mm (1/4"), 7mm Hardwood and 10mm (3/8") V-Nails - are the most useful sizes.
- When you peel off one V-Nail from the cartridge, the sharp edge, or top is facing down. This is the end which enters the wood first.
- The V-Nail is positioned AROUND the magnetic tip of the PushMaster. Make sure the V-Nail is sharp edge down. Align the V-Nail across the mitre, so that the sides of the V-Nail are parallel with the frame sides. This will also be with the grain in the timber.

On top of each V-Nail is a small amount of silicone tape which acts as a lubricant and assists the V-Nail to penetrate the wood more easily. It is therefore important to only use V-Nails with a silicone top, as well as those that have a very sharp cutting edge and a sharp right angle crease down the middle. All brands of V-Nails are NOT the same, so for best results use only genuine FrameCo V-Nails.

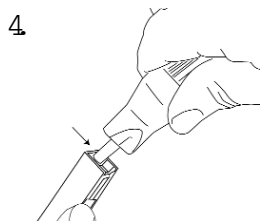
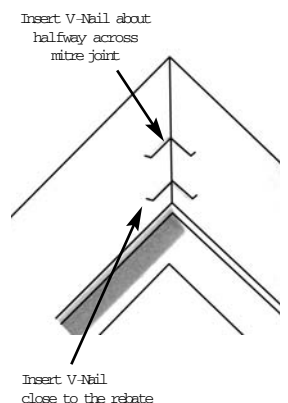


3. Insert the PushMaster behind the V-Nail

## Where to Place the V-Nails

Select a V-Nail suitable to the moulding height. As a general rule, use a V-Nail about 50-60% of the moulding height. V-Nails are available in 4 different heights, but the width is the same for all sizes.

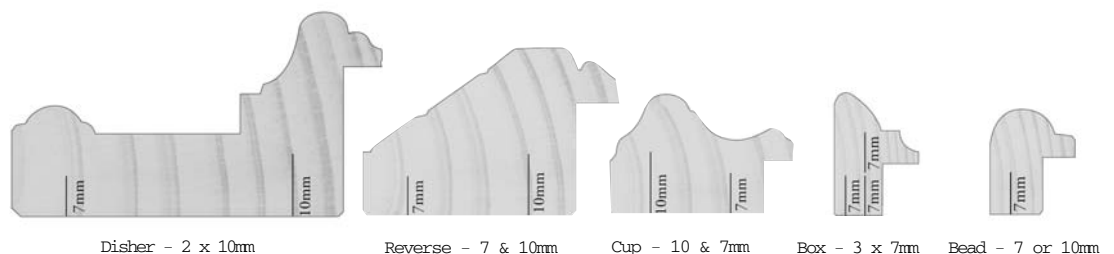
For wider mouldings V-Nail in two positions, i.e. front and back. Insert the front V-Nail first (i.e. closest to the rebate), then the second one close to the centre of the moulding. Do not place a V-Nail in the back 1/3 of the join as more "holding power" is obtained from V-Nails placed near the front rebate. Usually only two V-Nails per joint is quite sufficient to hold the frame securely.



4. Use the PushMaster to push the V-Nail out of the cartridge, applying upwards pressure to push the V-Nail out.



5. As the V-nail is pushed out of the cartridge it attaches itself onto the magnetic tip of the PushMaster.





FrameCo - Australia  
 10 Monomeeth Drive  
 Mitcham VIC 3132  
 Freecall: 1800 033 619  
 Ph: +613 9872 3600  
 Email: frame@frameco.com.au

FrameCo - U.K.  
 4 Pauls Hill, Penn,  
 Bucks UK HP10 8NZ  
 Freecall: 0800 389 0767  
 Ph: 01494 816 397  
 Email: info@clubframeco.co.uk

FrameCo - U.S.A.  
 3850 Ramada Drive D-1  
 Paso Robles, CA, USA 93446  
 Freecall: 800 682 1222  
 Ph: 805 434 0912  
 Email: info@frameco-usa.com

## How do they work?

The top of each V-Nail is coated with a small amount of silicone. This holds the V-Nails together, protects the sharp point and acts as a lubricant which assists the V-Nail to penetrate the wood frame more easily. It is therefore important to only use V-Nails which have a liberal coating of white or red silicone on one end, as they are easier to insert.

Each V-Nail has a small external curl on the outside "wing". This locks the V-Nail into the grain of the timber, preventing it from pulling out from the joint. This ensures a tight and secure join.

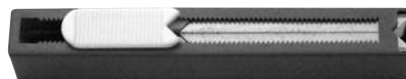
When entering the moulding, the V-Nail is deflected outwards, opening up slightly to create a wider v shape. As the nail tries to come back to its original shape, the joint is pulled together making a tight, secure join.

There are "Hardwood" and "Normal" versions of V-Nails. The normal V-Nails are sharp and penetrate most timbers by cutting across the grain. They are suitable for all soft/medium and some harder timbers. The hardwood version have a different point and move the grain apart as they enter the timber. They are only suitable for hardwood timbers.

IT IS BEST TO USE ONLY THE CORRECT TYPE OF V-NAIL Hardwood V-Nails should not be used in soft timbers as they will open the joint in the soft open grained timber.

### V-Nail Cartridges

FrameCo V-Nails are packed in cartridge dispensers. They are colour coded for easy identification. They have a "White" top for normal V-Nails and "Red" tops for hardwood V-Nails.



### FrameCo V-Nails

Standard - Recommended for standard moulding i.e. Pine or Obeche

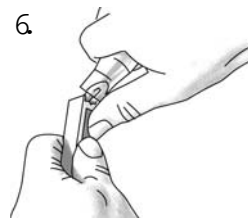
#10405	5mm	1/8"	Frame V-nails	400 V-Nails/pk.	
#10410	7mm	1/4"	Frame V-Nails	400 V-Nails/pk.	Yellow Cartridge/White Top
#10412	10mm	3/8"	Frame V-Nails	400 V-Nails/pk.	Blue Cartridge/White Top
#10414	12mm	1/2"	Frame V-Nails	400 V-Nails/pk.	White Cartridge/White Top
#10416	15mm	5/8"	Frame V-Nails	400 V-Nails/pk.	Red Cartridge/White Top
#10810	7mm	1/4"	Frame V-Nails	1000 V-Nails/pk.	Yellow Cartridge/White Top
#10812	10mm	3/8"	Frame V-Nails	1000 V-Nails/pk.	Blue Cartridge/White Top

Hardwood - Recommended for harder timbers i.e. Ramin, Oak, Jarrah or Plastic

#10411	7mm	1/4"	Frame V-Nails	400 V-Nails/pk.	Yellow Cartridge/Red Top
#10413	10mm	3/8"	Frame V-Nails	400 V-Nails/pk.	Blue Cartridge/Red Top
#10415	12mm	1/2"	Frame V-Nails	400 V-Nails/pk.	White Cartridge/Red Top
#10417	15mm	5/8"	Frame V-Nails	400 V-Nails/pk.	Red Cartridge/Red Top
#10811	7mm	1/4"	Frame V-Nails	1000 V-Nails/pk.	Yellow Cartridge/Red Top
#10813	10mm	3/8"	Frame V-Nails	1000 V-Nails/pk.	Blue Cartridge/Red Top

Each cartridge contains 140 V-Nails.

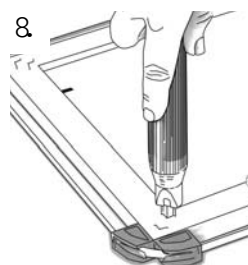
V-Nail cartridges are packed 3 per box = 400 V-Nail packs 8 per box = 1000 V-Nail packs



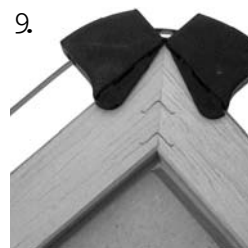
6 To help use your thumb for extra leverage to remove the nail



7 Check that only one V-Nail has been loaded



8 Insert the V-Nail about half way across mitre joint and close to the rebate



9 Make sure the V-Nails are parallel with the side of the frame

