

CUT GLASS

PROJECT: #25250

Difficulty Rating:



What you will need:

- 1 x Picture Glass
- 1 x Glass Cutter
- 1 x Mat Master™ Rule



#13220 Glass Cutter



#14209 Mat Master™ Rule

Glass is available from most glaziers - use only 2mm plain glass. Non-reflective glass can be used on some prints, but it is not recommended when using double mats, as non-reflective glass will reduce the intensity of the colour in the artwork, and can also distort line work. Plain glass enhances the colour and gives a crisp clean finish. If the area is too bright and reflection is a problem then move the picture - the bright light contains high UV rays and this will damage the artwork.

The FrameCo Glass Cutter is a tungsten-carbide glass cutting wheel mounted onto a solid aluminium base, which can be attached to the Mat Master™ Rule, ensuring accurate, clean cuts everytime. Because the head is vertical to the glass surface at all times, each cut is finer and more even. This means more successful cutting with less danger from broken or miss cut glass.

Instructions

1. For the best results attach the Glass Cutter to the FrameCo Mat Master™ Rule. See fig. 1
 However the cutter can also be used with any good quality straight edge.
2. Start with the indicator arrows, on the base of the cutter, level with the top edge of the glass. Place your index finger on the head knob (fig. 2), and with an even downwards pressure draw the cutter quickly back towards you. Do not press too hard.
3. Keep the speed of the cutter constant and run the cutter off the bottom edge of the glass without stopping.
4. **NEVER** recut a second time.
5. To break out the cut, slide the glass to the edge of the table or work bench, and place your fingers - see fig. 3. **Break by pushing upwards.** See fig. 4.

Please note: When working with glass safety goggles and gloves should be worn.

The FrameCo Glass Cutter can also be used freehand to create decorative cuts.

Note: 1. Glass will cut more easily if in a warm room. Very cold conditions causes breakout problems.
 2. Wipe the wheel of cutter on a cloth between cuts to remove excess glass fragments.

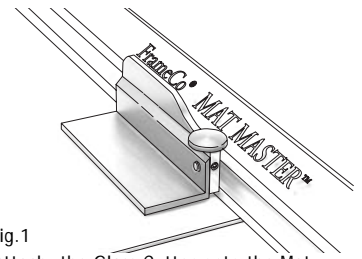


fig.1
 Attach the Glass Cutter onto the Mat Master Rule.

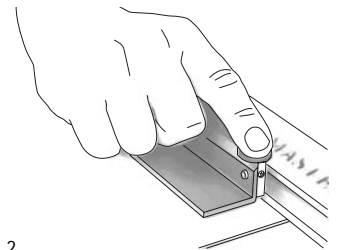


fig.2
 Place your index finger onto the knob and apply even pressure whilst cutting.

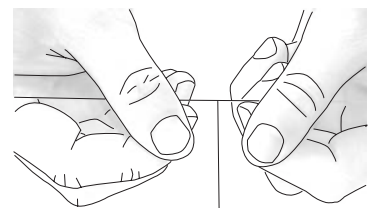


fig.3
 Hold the glass with fingers and thumbs

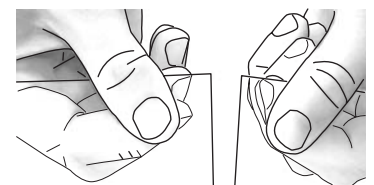
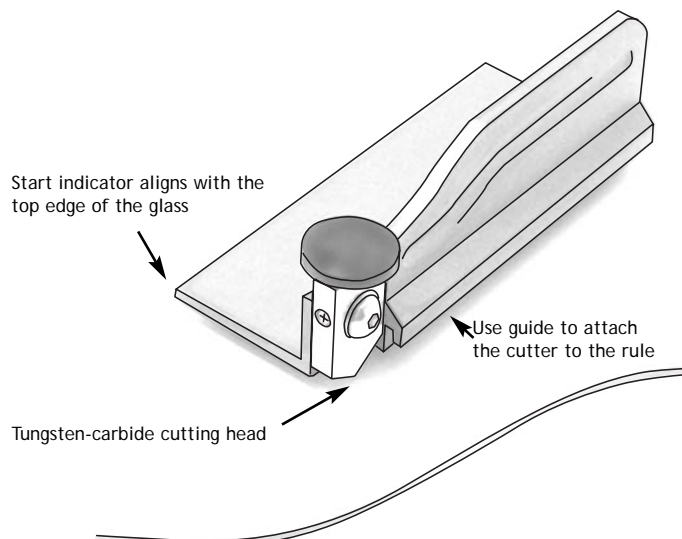


fig.4
 Break the glass by pushing upwards.



FrameCo - Australia
 Email: frame@frameco.com.au

FrameCo - Euro / U.K.
 Email: frame.uk@clubframeco.com

FrameCo - U.S.A.
 Email: info.usa@clubframeco.com