

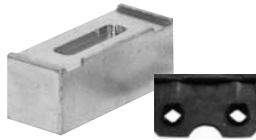
MAKE STAND BACKS AND HANGERS

PROJECT: #25209

Difficulty Rating:
 ★ ★ ★ ★ ★

What you will need:

- 1 x Hammer
- 1 x Hinge Block
- 1 x MDF Stand Legs
- 1 x Mounting Brackets
- 1 x Sawtooth Hangers



#21502 Hinge Block



#21497 MDF Stand Legs 150mm
 #21498 MDF Stand Legs 200mm



#14720 Bracket Head



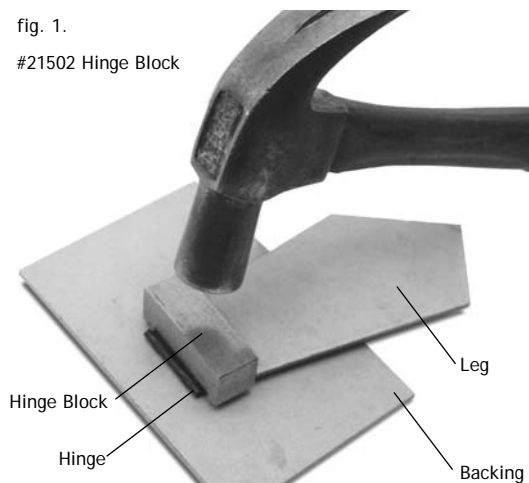
#14725 Sawtooth Head

Stand Backs - Hinges & Legs

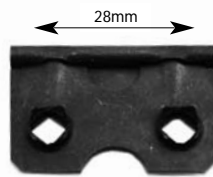
Make your own stand backs with the special Hinge, Ready-cut Leg and Applicator Block. The Hinge Applicator Block is hit with a hammer for correct use. The Hinge should be applied to 3mm MDF backing board for added strength - see fig. 1. The legs are made from 3mm MDF.

fig. 1.

#21502 Hinge Block



Hinge & Leg



#21503 Hinge X 10
 #21504 Hinge X 20

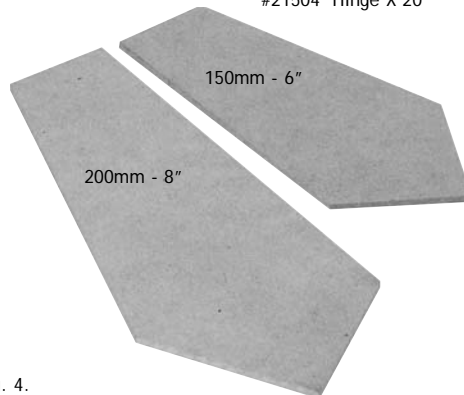


fig. 4.

#21497 MDF Stand Legs 150mm
 #21498 MDF Stand Legs 200mm

Stand Backs - Brackets & Legs

Stand Back Brackets & Sawtooth Hangers can be applied to 3mm MDF backing board using the PushMaster®. These brackets are best pressed onto the backing board, rather than hammering the fitting.

To do this it is best to use the BenchMaster® or the special Bracket Application Heads fitted into the PushMaster® - see fig. 2. Sawtooth hangers can also be applied using a special head which also fits into the PushMaster® - see fig. 3.

fig. 2.

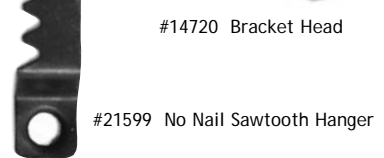
#14722 Small Leg Set
 #14723 Large Leg Set



Bracket



#14720 Bracket Head



#21599 No Nail Sawtooth Hanger

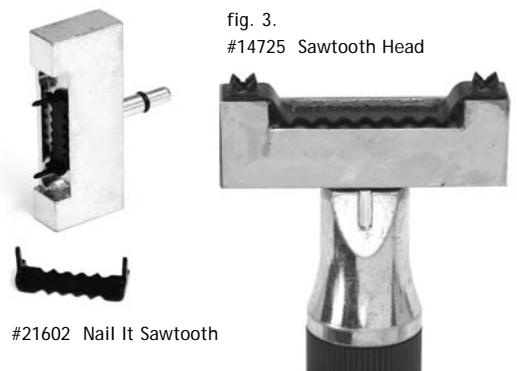


fig. 3.
 #14725 Sawtooth Head

#21602 Nail It Sawtooth

FrameCo - Australia
 Email: frame@frameco.com.au

FrameCo - Euro / U.K.
 Email: frame.uk@clubframeco.com

FrameCo - U.S.A.
 Email: info.usa@clubframeco.com